

G400DUO Undercounter Glasswasher

Technical Specifications



CLASSEQ
Warewashing Made Simple.

G400DUO

Compact, front-loading commercial glasswasher with a digital display, two wash programs and full WRAS compliance for effortless and consistently clean results.

The G400DUO is an easy to operate, under counter glasswasher with a 400 x 400mm basket that holds 16 pint-sized glasses. It features two wash cycles – standard (two minute) and light (1.5min), meaning that this machine is capable of washing up to 640 glasses per hour.

The digital LCD display accurately shows the temperature of the wash tank and rinse boiler, re-assuring the operator that it is up to temperature and fully sanitising during the wash cycle.

With intuitive colour coded lighting and universally recognised symbols, this machine has been designed to make operating as simple as possible, whilst also featuring performance enhancing customisations through its advanced settings mode. Additionally, its clever software constantly monitors wash cycles, temperatures, chemical usage and any errors giving valuable data which is used to improve operational efficiencies.

The Duo range of products all come with drain pumps, rinse booster pumps, built in chemical dispensers and full double skinned construction ensuring they meet all installation regulations and requirements. All Duo models are also available with an optional water softener – an essential requirement in hard water areas. (G400DUOWS)



Water Softener

Our G400DUO is also available with an integral water softener. Model code: G400DUOWS.



Locally manufactured

Our machines are Made in Britain (Staffordshire) meaning shorter lead times on delivery, parts and support.



2 Wash Programs

The G500DUO Standard (2 minute) and Light (1.5min) cycles allow for maximum output without compromising wash quality.



LCD display

The G400DUO enhances user functionality by displaying rinse and wash tank temperatures.



Double skinned sides and door

Allows for quieter operation and reduced heat loss.



Water Board (WRAS) compliant

All Duo machines are fully compliant with essential Water Board regulations.



Advanced Customer Features

Adjust rinse aid and detergent settings, priming of chemical pumps and set water softener to match local water hardness levels (WS models only).



Colour Coded Display

Amber flashing - Machine heating
Blue - Machine in cycle
Green - Machine ready



Operational Data monitoring

Our machine constantly measures all cycles, heating and errors providing useful data for improving efficiencies.

Machine Features:

1 400mm x 400mm basket	2 Built-in chemical pumps	3 Drain pump	4 Rinse Booster Pump	5 Energy saving standby mode
6 Stainless steel dual wash filter system	7 Temperature interlock - guarantees hot rinse	8 Assisted self-clean	9 Easily removable components	

Hydraulic specifications

Water supply connection

Minimum allowed supply water pressure

Required water flow rate

Minimum incoming water temperature

Maximum incoming water temperature

Gravity drain height (from machine base)

Pumped drain height (from machine base)

Drain size

G400DUO

G3/4" (3/4" BSP)

0.5 bar G400DUO model only
2.0 bar G400DUOWS model only

11 L/min G400DUO model only
4 L/min G400DUOWS model only

4°C

55°C

40 mm G400DUO model only
N/A G400DUOWS model only

540 mm

Ø40 mm

Electrical specifications

Standard Set-up

Amps Required

13A (1 phase)

Standard Operating Voltage

220-240V / 1N~ / 50Hz

Total Connected Load

2.85kW

Optional Set-up

Amps Required

13A (3 phase)*

Standard Operating Voltage

380-415V / 3N-/50Hz

Total Connected Load

6.58kW

Optional Set-up

Amps Required

30A (1 phase)*

Standard Operating Voltage

220-240V / 1N~ / 50Hz

Total Connected Load

6.58kW

Performance

Wash tank element

2.00kW

Rinse tank element

6.00kW

Wash tank capacity

10 litres

Rinse tank capacity

6.5 litres

Rinse water consumption at 3 bar

3.00 L/cycle

Theoretical maximum racks/hours

40

Wash tank temperature

55°C

Rinse tank temperature

70°C

Wash pump power

0.25 kW

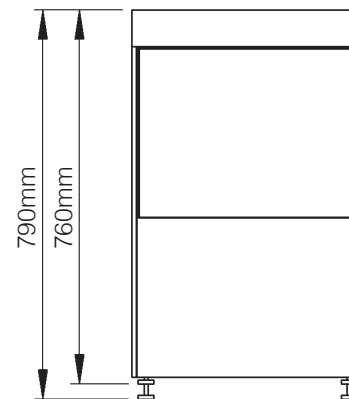
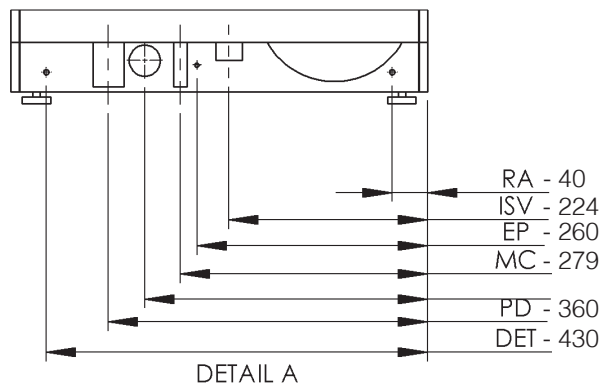
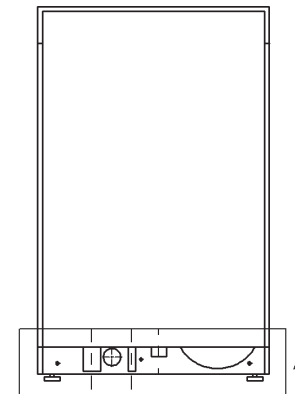
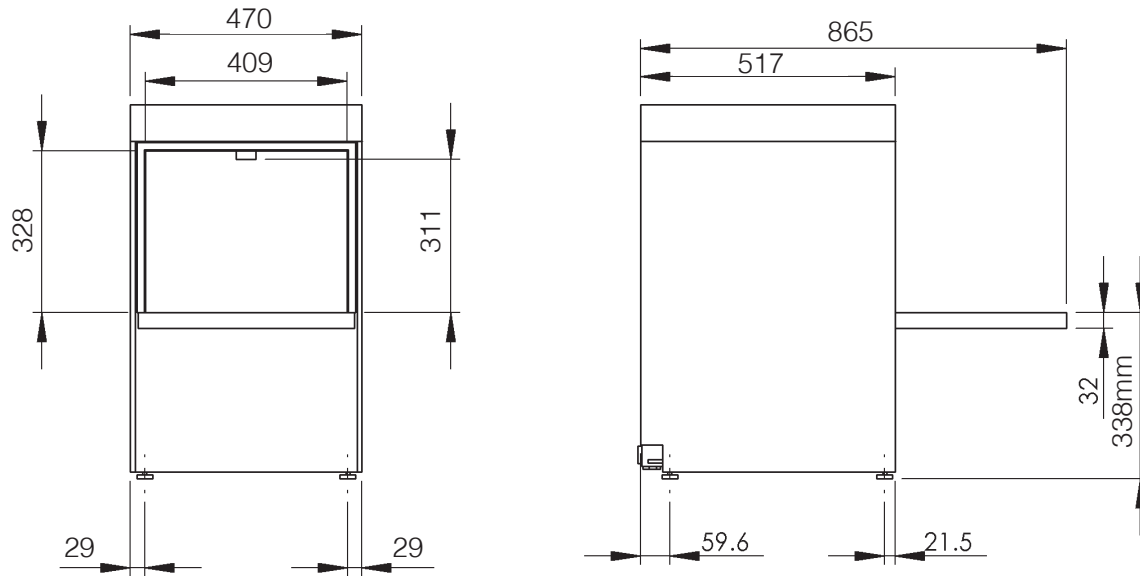
Rinse pump power

0.10kW

Please Note: G400DUOWS Specification as above.

***Optional Electrical Configurations :** An optional 13amp 3ph or 30amp 1ph configuration is available on all 400 models at an additional price.

Mechanical Specifications



Additional Info:

	G400DUO
Wash water temperature	55°C
Glass washer rinse temperature	70°C
Noise level	Under 70dB
Empty weight	40.3kg
Fully Loaded weight	46.8kg
Packed weight	49.8kg G400DUO model 51.9kg G400DUOWS model

Dimensions (mm):

470 (W) x 760 (H) (790 max) x 517 (D)

Description	Symbol	Radius from machine (m)
Rinse aid tube	RA	3
Inlet solenoid value	ISV	1.8
Mains electrical cable	EC	1.3
Pumped waste water outlet	PD	1.5
Equipotential bonding stud	EP	-
Detergent tube	DET	3

Please Note: All dimensions in mm

Contact:

Tel: +44 (0)844 225 9250
Email: sales@classeq.co.uk

Classeq Ltd, Roebuck Way,
Knowlhill, Milton Keynes MK5 8WH

www.classeq.co.uk

CLASSEQ
Warewashing Made Simple.