

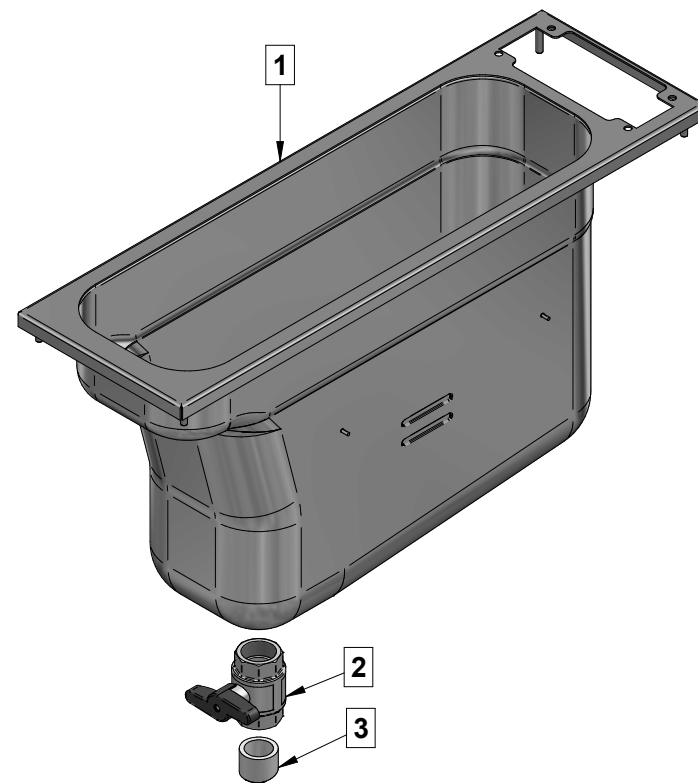


Super Easy  
Drop In

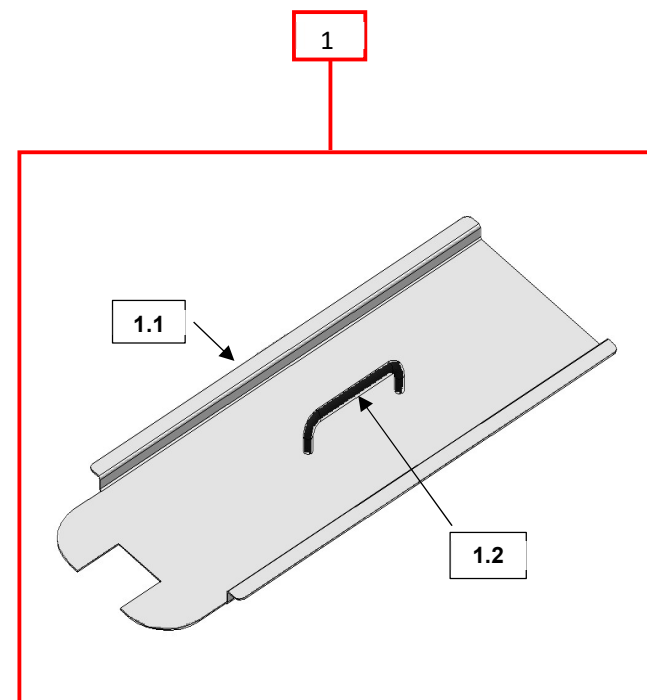
Spare Parts  
Ersatzteile  
Des pièces de rechange  
Pezzi di ricambio



| No       | Part N°<br>Teile-Nr<br>Numéro de pièce<br>Parte n | Description / Beschreibung / Descrizione | Number of parts per model<br>Anzahl der Teile pro Modell<br>Nombre de pièces par modèle<br>Numero di parti per modello |     |     |     |     |     |     |
|----------|---|--|--|-----|-----|-----|-----|-----|-----|
|          |   |  | 211  | 311 | 411 | 412 | 422 | 622 | 633 |
| 1        | FZ302050  | Tank                                     | 1  |     |     |     |     |     |     |
|          |   | Panzer                                   |  |     |     |     |     |     |     |
|          |   | Cuve                                     |  |     |     |     |     |     |     |
|          |   | Cisterna                                 |  |     |     |     |     |     |     |
|          | FZ302051  | Tank                                     |  | 1   |     |     |     |     |     |
|          |   | Panzer                                   |  |     |     |     |     |     |     |
|          |   | Cuve                                     |  |     |     |     |     |     |     |
|          |   | Cisterna                                 |  |     |     |     |     |     |     |
|          | FZ302052  | Tank                                     |  |     | 1   | 1   |     |     |     |
|          |   | Panzer                                   |  |     |     |     |     |     |     |
|          |   | Cuve                                     |  |     |     |     |     |     |     |
|          |   | Cisterna                                 |  |     |     |     |     |     |     |
|          | FZ302053  | Tank                                     |  |     |     |     | 1   |     |     |
|          |   | Panzer                                   |  |     |     |     |     |     |     |
|          |   | Cuve                                     |  |     |     |     |     |     |     |
|          |   | Cisterna                                 |  |     |     |     |     |     |     |
|          | FZ302054  | Tank                                     |  |     |     |     |     | 1   |     |
|          |   | Panzer                                   |  |     |     |     |     |     |     |
| Cuve     |   |  |  |     |     |     |     |     |     |
| Cisterna |   |  |  |     |     |     |     |     |     |
| TA136    | Tank  |  |  |     |     |     |     | 1   |     |
|          | Panzer  |  |  |     |     |     |     |     |     |
|          | Cuve  |  |  |     |     |     |     |     |     |
|          | Cisterna  |  |  |     |     |     |     |     |     |
| 2        | FZ401101  | Drain Valve 1"                           | 1  | 1   | 1   | 1   | 2   | 2   | 3   |
|          |   | Ablsventil 1"                            |  |     |     |     |     |     |     |
|          |   | Vanne de vidange 1"                      |  |     |     |     |     |     |     |
|          |   | Valvola di scarico 1"                    |  |     |     |     |     |     |     |
| 3        | B94200  | Drain Fitting                            | 1  | 1   | 1   | 1   | 2   | 2   | 3   |
|          |   | Ablaufgarnitur                           |  |     |     |     |     |     |     |
|          |   | Raccord de vidange                       |  |     |     |     |     |     |     |
|          |   | Raccordo di scarico                      |  |     |     |     |     |     |     |
|          |   |  |  |     |     |     |     |     |     |
|          |   |  |  |     |     |     |     |     |     |
|          |   |  |  |     |     |     |     |     |     |
|          |   |  |  |     |     |     |     |     |     |



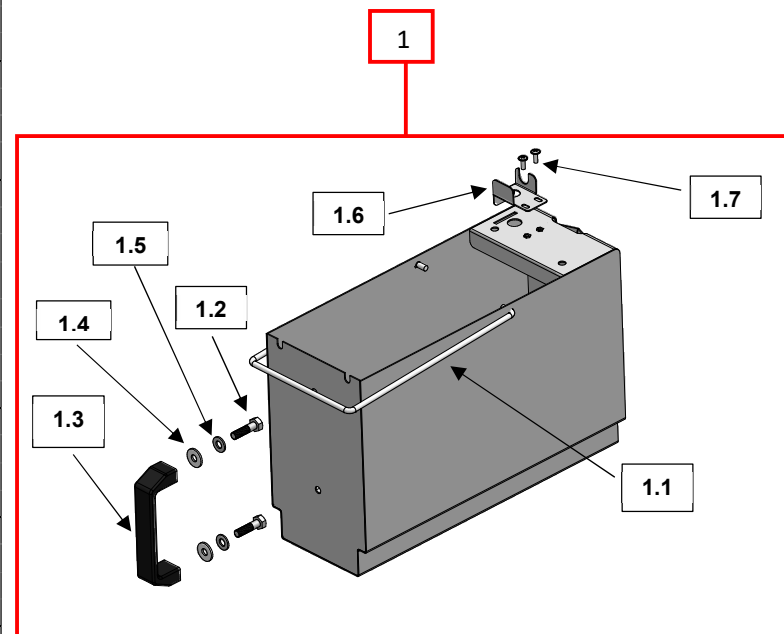
| No   | Part N°<br>Teile-Nr<br>Numéro de pièce<br>Parte n | Description / Beschreibung / Descrizione | Number of parts per model<br>Anzahl der Teile pro Modell<br>Nombre de pièces par modèle<br>Numero di parti per modello |     |     |         |     |     |     |  |
|------|---|--|--|-----|-----|---------|-----|-----|-----|--|
|      |   |  | 211  | 311 | 411 | 41<br>2 | 422 | 622 | 633 |  |
| 1    | FZ216059  | Tank Lid complete                        | 1  |     |     |         | 2   |     | 3   |  |
|      |   | Tankdeckel komplett                      |  |     |     |         |     |     |     |  |
|      |   | Couvercle du réservoir complet           |  |     |     |         |     |     |     |  |
|      |   | Coperchio del serbatoio completo         |  |     |     |         |     |     |     |  |
|      | FZ316059  | Tank Lid complete                        |  | 1   |     |         |     |     | 2   |  |
|      |   | Tankdeckel komplett                      |  |     |     |         |     |     |     |  |
|      |   | Couvercle du réservoir complet           |  |     |     |         |     |     |     |  |
|      |   | Coperchio del serbatoio completo         |  |     |     |         |     |     |     |  |
|      | FZ416059  | Tank Lid complete                        |  |     | 1   |         |     |     |     |  |
|      |   | Tankdeckel komplett                      |  |     |     |         |     |     |     |  |
|      |   | Couvercle du réservoir complet           |  |     |     |         |     |     |     |  |
|      |   | Coperchio del serbatoio completo         |  |     |     |         |     |     |     |  |
| LI59 | Tank Lid complete                                 |  |  |     | 1   |         |     |     |     |  |
|      | Tankdeckel komplett                               |  |  |     |     |         |     |     |     |  |
|      | Couvercle du réservoir complet                    |  |  |     |     |         |     |     |     |  |
|      | Coperchio del serbatoio completo                  |  |  |     |     |         |     |     |     |  |
| 1.1  | 50285   | Lid                                      | 1  |     |     |         | 2   |     | 3   |  |
|      |   | Deckel                                   |  |     |     |         |     |     |     |  |
|      |   | Couvercle                                |  |     |     |         |     |     |     |  |
|      |   | Coperchio                                |  |     |     |         |     |     |     |  |
|      | 50286   | Lid                                      |  | 1   |     |         |     |     | 2   |  |
|      |   | Deckel                                   |  |     |     |         |     |     |     |  |
|      |   | Couvercle                                |  |     |     |         |     |     |     |  |
|      |   | Coperchio                                |  |     |     |         |     |     |     |  |
|      | 50287   | Lid                                      |  |     |     | 1       |     |     |     |  |
|      |   | Deckel                                   |  |     |     |         |     |     |     |  |
|      |   | Couvercle                                |  |     |     |         |     |     |     |  |
|      |   | Coperchio                                |  |     |     |         |     |     |     |  |
|      | 50288   | Lid                                      |  | 1*  |     |         |     |     |     |  |
|      |   | Deckel                                   |  |     |     |         |     |     |     |  |
|      |   | Couvercle                                |  |     |     |         |     |     |     |  |
|      |   | Coperchio                                |  |     |     |         |     |     |     |  |



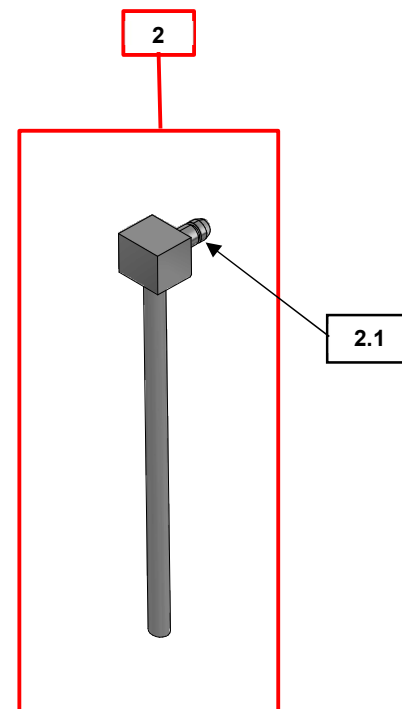
| No   | Part N°<br>Teile-Nr<br>Numéro de pièce<br>Parte n | Description / Beschreibung / Descrizione | Number of parts per model<br>Anzahl der Teile pro Modell<br>Nombre de pièces par modèle<br>Numero di parti per modello |     |     |     |     |     |     |   |   |   |   |
|--|---|--|--|-----|-----|-----|-----|-----|-----|---|---|---|---|
|  |   |  | 211  | 311 | 411 | 412 | 422 | 622 | 633 |   |   |   |   |
| 1.1  | 50289   | Lid                                      |  |     | 1   |     |     |     |     |   |   |   |   |
|  |   | Deckel                                   |  |     |     |     |     |     |     |   |   |   |   |
|  |   | Couvercle                                |  |     |     |     |     |     |     |   |   |   |   |
|  |   | Coperchio                                |  |     |     |     |     |     |     |   |   |   |   |
| 1.2  | FZ400623  | Handle                                   |  |     | 1   | 1   | 2   | 2   | 3   |   |   |   |   |
|  |   | Handhaben                                | 1  | 1   |     |     |     |     |     | 1 | 2 | 2 | 3 |
|  |   | Gérer                                    |  |     |     |     |     |     |     |   |   |   |   |
|  |   | Maniglia                                 |  |     |     |     |     |     |     |   |   |   |   |
| 1.3  | FZ400431  | M4 x 8 Screw not shown                   |  |     | 2   | 2   | 2   | 2   | 4   |   |   |   |   |
|  |   | M4 x 8 Schraube nicht abgebildet         |  |     |     |     |     |     |     |   |   |   |   |
|  |   | Vis M4 x 8 non                           |  |     |     |     |     |     |     |   |   |   |   |
|  |   | Vite M4 x 8 non mostrata illustrée       |  |     |     |     |     |     |     |   |   |   |   |
| <p>Note: * For use with small baskets<br/>         Notiz: * Zur Verwendung mit kleinen Körben.<br/>         Note: * À utiliser avec de petits paniers.<br/>         Nota: * Da utilizzare con cestini piccoli.</p> |   |  |  |     |     |     |     |     |     |   |   |   |   |
|  |   |  |  |     |     |     |     |     |     |   |   |   |   |
|  |   |  |  |     |     |     |     |     |     |   |   |   |   |
|  |   |  |  |     |     |     |     |     |     |   |   |   |   |
|  |   |  |  |     |     |     |     |     |     |   |   |   |   |



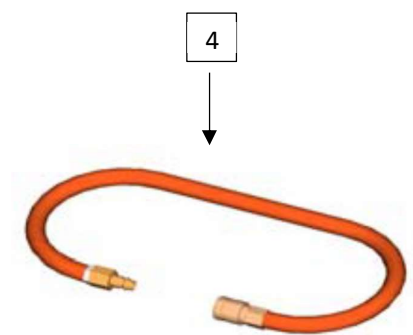
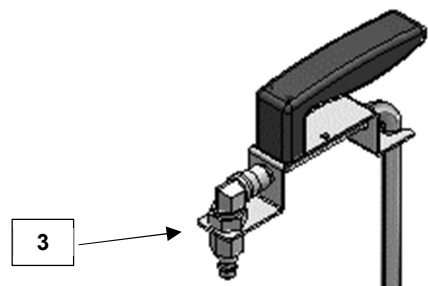
| No  | Part N°<br>Teile-Nr<br>Numéro de pièce<br>Parte n                   | Description / Beschreibung /<br>Descrizione | Number of parts per model<br>Anzahl der Teile pro Modell<br>Nombre de pièces par modèle<br>Numero di parti per modello |     |     |     |     |     |     |
|---|---|---|--|-----|-----|-----|-----|-----|-----|
|   |   |   | 211  | 311 | 411 | 412 | 422 | 622 | 633 |
| 1   | OB09  | Bucket Assembly                             | 1  |     |     |     | 2   | 3   |     |
|   |   | Eimermontage                                |  |     |     |     |     |     |     |
|   |   | Assemblage du godet                         |  |     |     |     |     |     |     |
|   |   | Montaggio della benna                       |  |     |     |     |     |     |     |
|   | OB10  | Bucket Assembly                             |  | 1   |     |     |     | 2   |     |
|   |   | Eimermontage                                |  |     |     |     |     |     |     |
|   |   | Assemblage du godet                         |  |     |     |     |     |     |     |
|   |   | Montaggio della benna                       |  |     |     |     |     |     |     |
|   | OB11<br>single pump<br>Einzelpumpe<br>pompe simple<br>singola pompa | Bucket Assembly                             |  |     | 1   | 1   | 1   |     |     |
|   |   | Eimermontage                                |  |     |     |     |     |     |     |
|   |   | Assemblage du godet                         |  |     |     |     |     |     |     |
|   |   | Montaggio della benna                       |  |     |     |     |     |     |     |
| OB12<br>single pump<br>Einzelpumpe<br>pompe simple<br>singola pompa | Bucket Assembly   |   |  |     |     |     | 1   | 1   |     |
|   | Eimermontage  |   |  |     |     |     |     |     |     |
|   | Assemblage du godet   |   |  |     |     |     |     |     |     |
|   | Montaggio della benna   |   |  |     |     |     |     |     |     |
| 1.1   | HA127   | Rod handle                                  | 1  |     |     |     | 2   | 3   |     |
|   |   | Stangengriff                                |  |     |     |     |     |     |     |
|   |   | Poignée de tige                             |  |     |     |     |     |     |     |
|   |   | Manico ad asta                              |  |     |     |     |     |     |     |
|   | HA128   | Rod handle                                  |  | 1   |     |     |     | 2   |     |
|   |   | Stangengriff                                |  |     |     |     |     |     |     |
|   |   | Poignée de tige                             |  |     |     |     |     |     |     |
|   |   | Manico ad asta                              |  |     |     |     |     |     |     |
|   | HA129   | Rod handle                                  |  |     | 1   | 1   | 1   |     |     |
|   |   | Stangengriff                                |  |     |     |     |     |     |     |
|   |   | Poignée de tige                             |  |     |     |     |     |     |     |
|   |   | Manico ad asta                              |  |     |     |     |     |     |     |
| HA130   | Rod handle  |   |  |     |     |     | 1   | 1   |     |
|   | Stangengriff  |   |  |     |     |     |     |     |     |
|   | Poignée de tige   |   |  |     |     |     |     |     |     |
|   | Manico ad asta  |   |  |     |     |     |     |     |     |
|   |   |   |  |     |     |     |     |     |     |
|   |   |   |  |     |     |     |     |     |     |
|   |   |   |  |     |     |     |     |     |     |
|   |   |   |  |     |     |     |     |     |     |



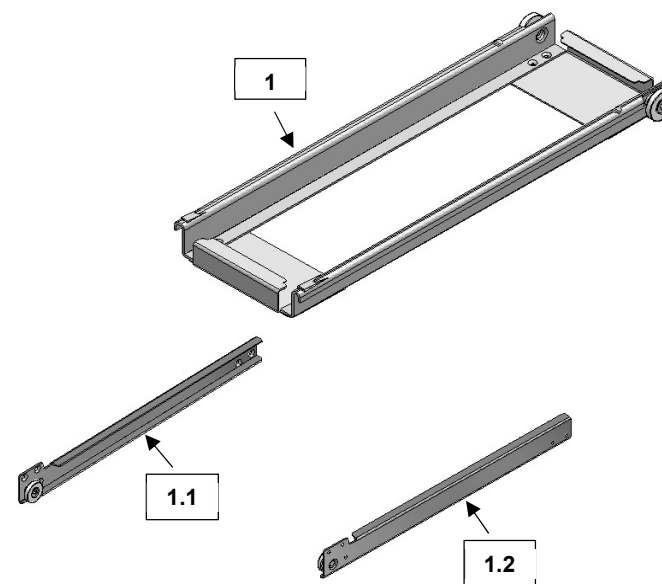
| No  | Part N°<br>Teile-Nr<br>Numéro de pièce<br>Parte n | Description / Beschreibung /<br>Descrizione     | Number of parts per model<br>Anzahl der Teile pro Modell<br>Nombre de pièces par modèle<br>Numero di parti per modello |     |     |     |     |     |     |
|-----|---|---|--|-----|-----|-----|-----|-----|-----|
|     |   |   | 211  | 311 | 411 | 412 | 422 | 622 | 633 |
| 1.2 | FZ400859  | M8 x 10 Screw                                   | 2  | 2   | 2   | 2   | 4   | 4   | 6   |
|     |   | M8 x 10 Schraube                                |  |     |     |     |     |     |     |
|     |   | Vis M8 x10                                      |  |     |     |     |     |     |     |
|     |   | Vite M8 x 10                                    |  |     |     |     |     |     |     |
| 1.3 | FZ400804  | Grab Handle                                     | 1  | 1   | 1   | 1   | 2   | 2   | 3   |
|     |   | M8 x 10 Schraube                                |  |     |     |     |     |     |     |
|     |   | Poignée   |  |     |     |     |     |     |     |
|     |   | Afferra la maniglia                             |  |     |     |     |     |     |     |
| 1.4 | FAS661  | M8 PTFE Washer                                  | 2  | 2   | 2   | 2   | 4   | 4   | 6   |
|     |   | M8 PTFE-Unterlegscheibe                         |  |     |     |     |     |     |     |
|     |   | Rondelle PTFE M8                                |  |     |     |     |     |     |     |
|     |   | Rondella M8 in PTFE                             |  |     |     |     |     |     |     |
| 1.5 | FZ09411117  | D8.4 20x2 Washer                                | 2  | 2   | 2   | 2   | 4   | 4   | 6   |
|     |   | D8.4 20x2 Unterlegscheibe                       |  |     |     |     |     |     |     |
|     |   | Rondelle D8.4 20x2                              |  |     |     |     |     |     |     |
|     |   | D8.4 Rondella 20x2                              |  |     |     |     |     |     |     |
| 1.6 | 211048  | Oil Pump Bracket                                | 1 per Pump<br>1 pro Pumpe<br>1 par pompe<br>1 per pompa  |     |     |     |     |     |     |
|     |   | Ölpumpenhalterung                               |  |     |     |     |     |     |     |
|     |   | Support de pompe à huile                        |  |     |     |     |     |     |     |
|     |   | Staffa della pompa dell'olio                    |  |     |     |     |     |     |     |
| 1.7 | F400434   | M5 x 12 Screw                                   | 2 per Pump<br>2 pro Pumpe<br>2 par pompe<br>2 per pompa  |     |     |     |     |     |     |
|     |   | M5 x 12 Schraube                                |  |     |     |     |     |     |     |
|     |   | Vis M5 x 12                                     |  |     |     |     |     |     |     |
|     |   | Vite M5 x 12                                    |  |     |     |     |     |     |     |
| 2   | FZ214015  | Pump Coupling (inc. 'O' ring)                   | 1 per Pump<br>1 pro Pumpe<br>1 par pompe<br>1 per pompa  |     |     |     |     |     |     |
|     |   | Pumpenkupplung (inkl. O-Ring)                   |  |     |     |     |     |     |     |
|     |   | Accouplement de pompe (y compris joint torique) |  |     |     |     |     |     |     |
|     |   | Accoppiamento pompa (incluso 'O' ring)          |  |     |     |     |     |     |     |
|     |   |   |  |     |     |     |     |     |     |
|     |   |   |  |     |     |     |     |     |     |
|     |   |   |  |     |     |     |     |     |     |



| No  | Part N°<br>Teile-Nr<br>Numéro de pièce<br>Parte n | Description / Beschreibung / Descrizione | Number of parts per model<br>Anzahl der Teile pro Modell<br>Nombre de pièces par modèle<br>Numero di parti per modello |     |     |     |     |     |     |
|-----|---|--|--|-----|-----|-----|-----|-----|-----|
|     |   |  | 211  | 311 | 411 | 412 | 422 | 622 | 633 |
| 2.1 | FZ400997  | Replacement 'O' ring                     |  |     |     |     |     |     |     |
|     |   | Ersatz-O-Ring                            |  |     |     |     |     |     |     |
|     |   | Joint torique de rechange                |  |     |     |     |     |     |     |
|     |   | 'O' ring di ricambio                     |  |     |     |     |     |     |     |
| 3   | FZ216060  | Drain Pistol – complete                  |  |     |     |     |     |     |     |
|     |   | Ablaspistole – komplett                  |  |     |     |     |     |     |     |
|     |   | Pistolet de vidange – complet            |  |     |     |     |     |     |     |
|     |   | Pistola di scarico – completa            |  |     |     |     |     |     |     |
| 4   | FZ214160  | Flexible Red Evacuation Hose             |  |     |     |     |     |     |     |
|     |   | Flexibler roter Evakuierungsschlauch     |  |     |     |     |     |     |     |
|     |   | Tuyau d'évacuation flexible rouge        |  |     |     |     |     |     |     |
|     |   | Tube di evacuazione flessibile rosso     |  |     |     |     |     |     |     |
|     |   |  |  |     |     |     |     |     |     |
|     |   |  |  |     |     |     |     |     |     |
|     |   |  |  |     |     |     |     |     |     |
|     |   |  |  |     |     |     |     |     |     |
|     |   |  |  |     |     |     |     |     |     |
|     |   |  |  |     |     |     |     |     |     |
|     |   |  |  |     |     |     |     |     |     |
|     |   |  |  |     |     |     |     |     |     |
|     |   |  |  |     |     |     |     |     |     |
|     |   |  |  |     |     |     |     |     |     |
|     |   |  |  |     |     |     |     |     |     |
|     |   |  |  |     |     |     |     |     |     |

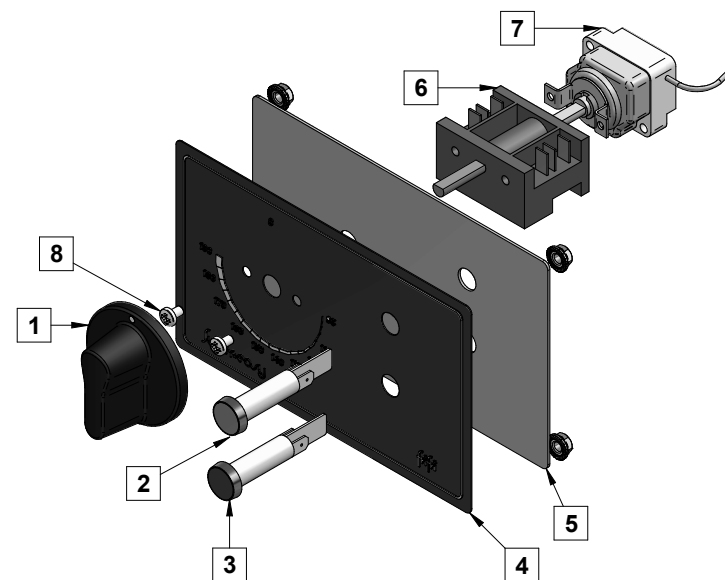


| No    | Part N°<br>Teile-Nr<br>Numéro de pièce<br>Parte n | Description / Beschreibung / Descrizione | Number of parts per model<br>Anzahl der Teile pro Modell<br>Nombre de pièces par modèle<br>Numero di parti per modello |     |     |     |     |     |     |
|-------|---|--|--|-----|-----|-----|-----|-----|-----|
|       |   |  | 211  | 311 | 411 | 412 | 422 | 622 | 633 |
| 1     | CA250   | Carriage Assembly                        |  |     |     |     |     |     |     |
|       |   | Wagenmontage                             |  |     |     |     |     |     |     |
|       |   | Assemblage du chariot                    |  | 1   |     |     |     |     | 3   |
|       |   | Montaggio del carrello                   |  |     |     |     |     |     |     |
|       | CA251   | Carriage Assembly                        |  |     |     |     |     |     |     |
|       |   | Wagenmontage                             |  |     |     |     |     |     |     |
|       |   | Assemblage du chariot                    |  |     | 1   |     |     | 2   |     |
|       |   | Montaggio del carrello                   |  |     |     |     |     |     |     |
|       | CA252   | Single Bucket Version                    |  |     |     |     |     |     |     |
|       |   | Single-Bucket-Version                    |  |     |     |     |     |     |     |
|       |   | Version à godet unique                   |  |     |     | 1   | 1   |     |     |
|       |   | Versione a benna singola                 |  |     |     |     |     |     |     |
| CA253 | Single Bucket Version                             |  |  |     |     |     |     |     |     |
|       | Single-Bucket-Version                             |  |  |     |     |     |     |     |     |
|       | Version à godet unique                            |  |  |     |     |     | 1   | 1   |     |
|       | Versione a benna singola                          |  |  |     |     |     |     |     |     |
| 1.1   | FX101452  | Carriage Guide LH                        |  |     |     |     |     |     |     |
|       |   | Wagenführung LH                          |  |     |     |     |     |     |     |
|       |   | Guide du chariot LH                      |  | 1   | 1   | 1   | 1   | 2   | 3   |
|       |   | Guida carrello SX                        |  |     |     |     |     |     |     |
| 1.2   | FX101453  | Carriage Guide RH                        |  |     |     |     |     |     |     |
|       |   | Wagenführung RH                          |  |     |     |     |     |     |     |
|       |   | Guide du chariot RH                      |  | 1   | 1   | 1   | 1   | 2   | 3   |
|       |   | Guida carrello DX                        |  |     |     |     |     |     |     |
|       |   |  |  |     |     |     |     |     |     |
|       |   |  |  |     |     |     |     |     |     |
|       |   |  |  |     |     |     |     |     |     |
|       |   |  |  |     |     |     |     |     |     |

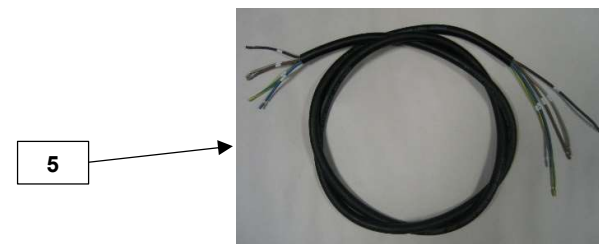
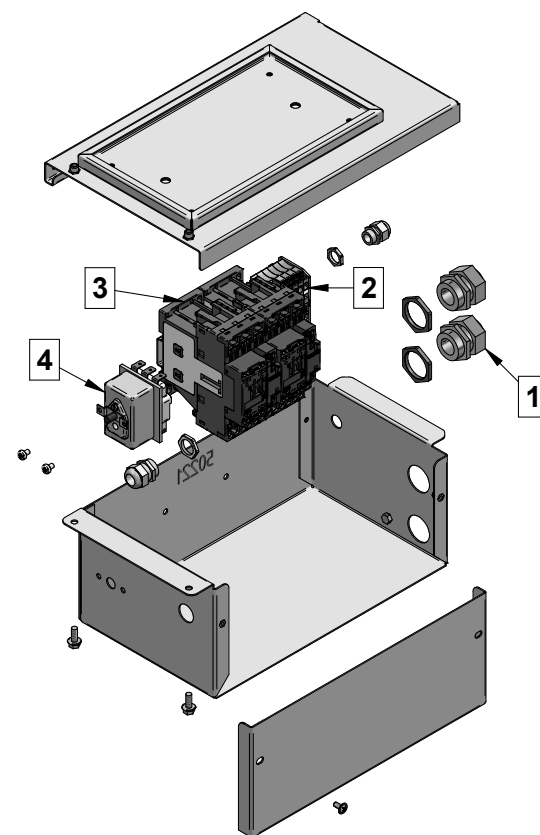




| No | Part N°<br>Teile-Nr<br>Numéro de pièce<br>Parte n | Description / Beschreibung / Descrizione | Number of parts per model<br>Anzahl der Teile pro Modell<br>Nombre de pièces par modèle<br>Numero di parti per modello |     |     |     |     |     |     |
|----|---|--|--|-----|-----|-----|-----|-----|-----|
|    |   |  | 211  | 311 | 411 | 412 | 422 | 622 | 633 |
| 1  | FZ214000  | Control Knob                             | 1  | 1   | 1   | 1   | 1   | 2   | 3   |
|    |   | Drehknopf                                |  |     |     |     |     |     |     |
|    |   | Bouton de cmde                           |  |     |     |     |     |     |     |
|    |   | Manopola                                 |  |     |     |     |     |     |     |
| 2  | NE47  | Amber Neon                               | 1  | 1   | 1   | 1   | 1   | 2   | 3   |
|    |   | Bernsteinfarbene Neonlampe               |  |     |     |     |     |     |     |
|    |   | Lampe Néon Ambre                         |  |     |     |     |     |     |     |
|    |   | Lampada al neon ambra                    |  |     |     |     |     |     |     |
| 3  | NE46  | Green neon                               | 1  | 1   | 1   | 1   | 1   | 2   | 3   |
|    |   | Grüne Neonlampe                          |  |     |     |     |     |     |     |
|    |   | Lampe Néon Vert                          |  |     |     |     |     |     |     |
|    |   | Lampada al neon verde                    |  |     |     |     |     |     |     |
| 4  | OL52  | Overlay                                  | 1  | 1   | 1   | 1   | 1   | 2   | 3   |
|    |   | Überlagerung                             |  |     |     |     |     |     |     |
|    |   | Recouvrir                                |  |     |     |     |     |     |     |
|    |   | Sovrapposizione                          |  |     |     |     |     |     |     |
| 5  | 28400   | Fixing Plate                             | 1  | 1   | 1   | 1   | 1   | 2   | 3   |
|    |   | Befestigungsplatte                       |  |     |     |     |     |     |     |
|    |   | Plaque de fixation                       |  |     |     |     |     |     |     |
|    |   | Piastra di fissaggio                     |  |     |     |     |     |     |     |
| 6  | SW58  | Switch                                   | 1  | 1   | 1   | 1   | 1   | 2   | 3   |
|    |   | Hauptschalter                            |  |     |     |     |     |     |     |
|    |   | Interrupteur                             |  |     |     |     |     |     |     |
|    |   | Interruttore                             |  |     |     |     |     |     |     |
| 7  | Y16000  | Control Thermostat                       | 1  | 1   | 1   | 1   | 1   | 2   | 3   |
|    |   | Thermostat                               |  |     |     |     |     |     |     |
|    |   | Thermostat de travail                    |  |     |     |     |     |     |     |
|    |   | Termostato di lavoro                     |  |     |     |     |     |     |     |
| 8  | FAS177  | Screw M4 X 6 A2 PZ PAN HD                | 1  | 1   | 1   | 1   | 1   | 2   | 3   |
|    |   | Schraube M4 X 6 A2 PZ PAN HD             |  |     |     |     |     |     |     |
|    |   | Vis M4 X 6 A2 PZ PAN HD                  |  |     |     |     |     |     |     |
|    |   | Vite M4 X 6 A2 PZ PAN HD                 |  |     |     |     |     |     |     |



| No   | Part N°<br>Teile-Nr<br>Numéro de pièce<br>Parte n  | Description / Beschreibung / Descrizione   | Number of parts per model<br>Anzahl der Teile pro Modell<br>Nombre de pièces par modèle<br>Numero di parti per modello |  |     |     |     |     |     |
|--|--|--|--|--|-----|-----|-----|-----|-----|
|  |  |  | 211  | 311  | 411 | 412 | 422 | 622 | 633 |
| 1  | Cable Glands – dependant on model and configuration - see below<br>Kabelverschraubungen – je nach Modell und Konfiguration – siehe unten<br>Presse-étoupes - en fonction du modèle et de la configuration - voir ci-dessous<br>Pressacavi - a seconda del modello e della configurazione - vedere di seguito |  |  |  |     |     |     |     |     |
| 2  | FZ101334   | Terminal on Rail<br>Terminal auf der Schiene<br>Terminal sur rail<br>Terminale su rotaia   | 1  | 1  | 1   | 1   | 2   | 2   | 3   |
| 3  | CO264  | Contactor<br>Schütz<br>Contacteur<br>Contattore  | 2  | 2  | 2   | 2   | 4   | 4   | 6   |
| 4  | TH78   | Safety thermostat<br>Sicherheitsthermostat<br>Thermostat de sécurité<br>Termostato di sicurezza  | 1  | 1  | 1   | 1   | 2   | 2   | 3   |
| 5  | FZ100850   | Supply Cable 5x2.5mm <sup>2</sup><br>Versorgungskabel 5x2,5 mm <sup>2</sup><br>Câble d'alimentation 5x2,5 mm <sup>2</sup><br>Cavo di alimentazione 5x2,5 mm <sup>2</sup> |  |  |     |     |     |     |     |
|  | FZ42051807   | Supply Cable 5x4mm <sup>2</sup><br>Versorgungskabel 5x4 mm <sup>2</sup><br>Câble d'alimentation 5x4 mm <sup>2</sup><br>Cavo di alimentazione 5x4 mm <sup>2</sup>         |  |  |     |     |     |     |     |
| Gland Details<br>Drüsendetails<br>Détails de la glande<br>Dettagli della ghiandola |  | Gland<br>Drüse<br>Glande<br>Ghiandola  | Locknut<br>Kontermutter<br>Contre-écrou<br>Dado di bloccaggio  | Blanking Plug<br>Blindstopfen<br>Bouchon d'obturation<br>Tappo cieco |     |     |     |     |     |
| M10  |  | FZ214045   | FZ214057   | FZ214055   |     |     |     |     |     |
| M12  |  | FZ214016   | FZ214058   | FZ214056   |     |     |     |     |     |
| M16  |  | FZ214103   | FZ214105   | FZ214104   |     |     |     |     |     |
| M25  |  | FZ214047   | FZ214059   | FZ214054   |     |     |     |     |     |
| M32  |  | GL732  | NT01   | N/A  |     |     |     |     |     |



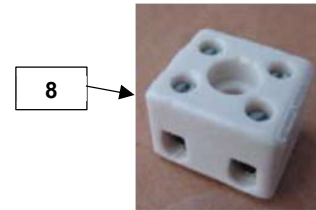
| No                           | Part N°<br>Teile-Nr<br>Numéro de pièce<br>Parte n | Description / Beschreibung / Descrizione | Number of parts per model<br>Anzahl der Teile pro Modell<br>Nombre de pièces par modèle<br>Numero di parti per modello |     |     |     |     |     |     |
|------------------------------|---|--|--|-----|-----|-----|-----|-----|-----|
|                              |   |  | 211  | 311 | 411 | 412 | 422 | 622 | 633 |
| 6                            | CA243   | Wires to Heating Elements                | 1  |     | 2   | 2   | 2   |     | 3   |
|                              |   | Drähte zu Heizelementen                  |  |     |     |     |     |     |     |
|                              |   | Fils aux éléments chauffants             |  |     |     |     |     |     |     |
|                              | CA155   | Fili agli elementi riscaldanti           |  |     |     |     |     |     |     |
|                              |   | Wires to Heating Elements                | 1  |     |     |     |     | 2   |     |
|                              |   | Drähte zu Heizelementen                  |  |     |     |     |     |     |     |
| Fils aux éléments chauffants |   |  |  |     |     |     |     |     |     |
|                              |   | Fili agli elementi riscaldanti           |  |     |     |     |     |     |     |
|                              |   |  |  |     |     |     |     |     |     |
|                              |   |  |  |     |     |     |     |     |     |
|                              |   |  |  |     |     |     |     |     |     |
|                              |   |  |  |     |     |     |     |     |     |
|                              |   |  |  |     |     |     |     |     |     |
|                              |   |  |  |     |     |     |     |     |     |
|                              |   |  |  |     |     |     |     |     |     |
|                              |   |  |  |     |     |     |     |     |     |
|                              |   |  |  |     |     |     |     |     |     |
|                              |   |  |  |     |     |     |     |     |     |
|                              |   |  |  |     |     |     |     |     |     |
|                              |   |  |  |     |     |     |     |     |     |



↑  
6



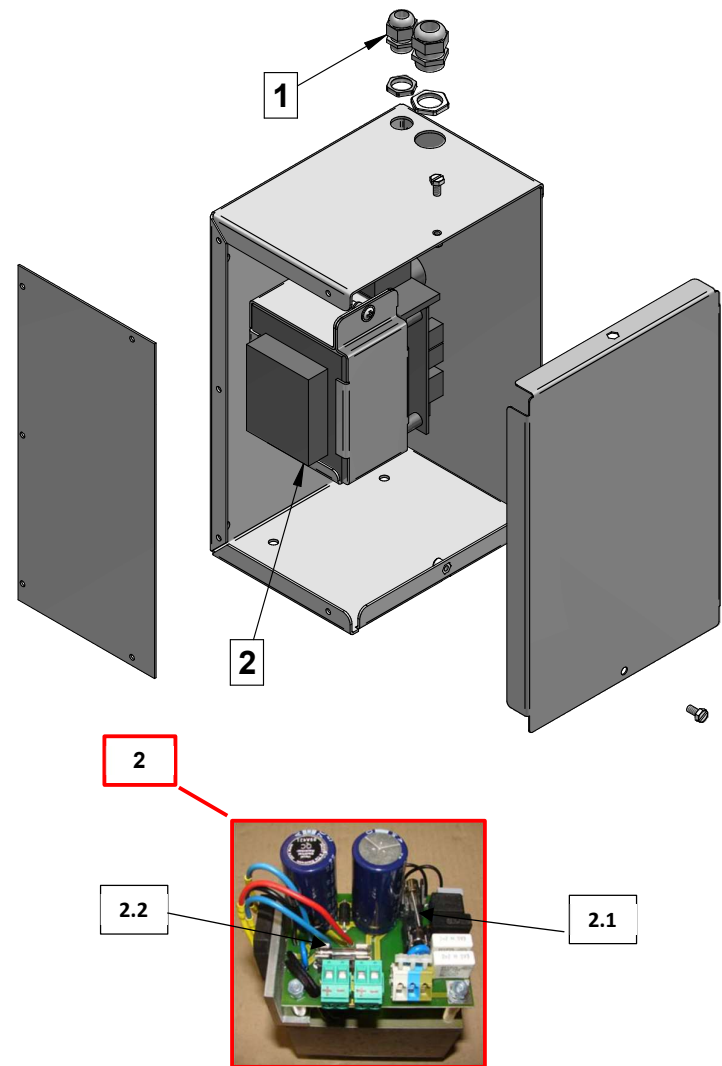
↑  
6



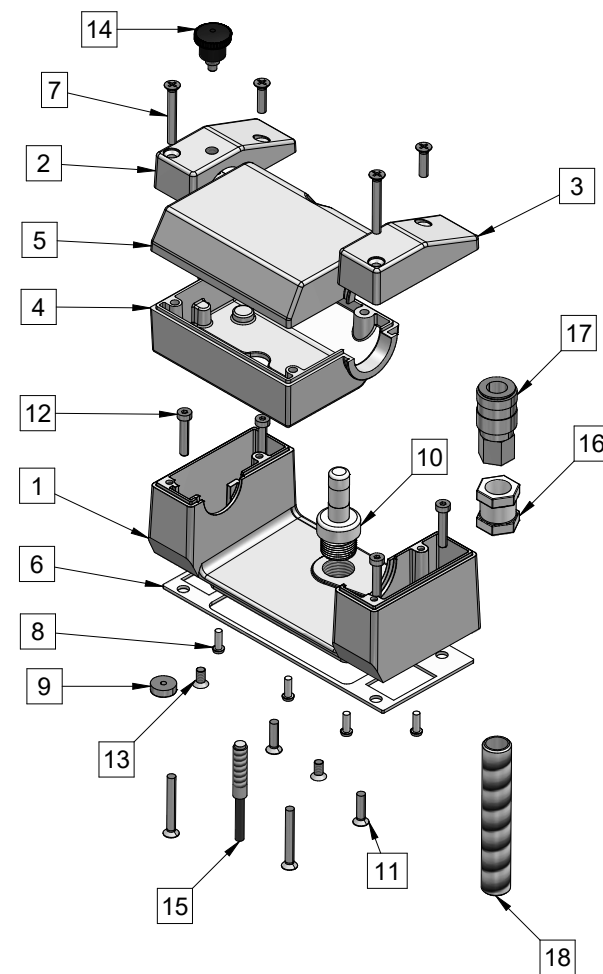
8 →



| No   | Part N°<br>Teile-Nr<br>Numéro de pièce<br>Parte n | Description / Beschreibung / Descrizione   | Number of parts per model<br>Anzahl der Teile pro Modell<br>Nombre de pièces par modèle<br>Numero di parti per modello |     |          |     |     |     |     |  |
|--|---|--|--|-----|----------|-----|-----|-----|-----|--|
|  |   |  | 211  | 311 | 411      | 412 | 422 | 622 | 633 |  |
| 1  |   | Cable Glands – dependant on model and configuration - see below<br>Kabelverschraubungen – je nach Modell und Konfiguration – siehe unten<br>Presse-étoupes - en fonction du modèle et de la configuration - voir ci-dessous<br>Pressacavi - a seconda del modello e della configurazione - vedere di seguito |  |     |          |     |     |     |     |  |
| 2  | FZ214026  | Power Supply   | 1  | 1   | 1        | 1   | 2   | 2   | 2   |  |
|  |   | Stromversorgung  |  |     |          |     |     |     |     |  |
|  |   | Source de courant  |  |     |          |     |     |     |     |  |
|  |   | Alimentazione elettrica  |  |     |          |     |     |     |     |  |
| 2.1  | FZ 214117   | Fuse 5X20 / 10AT   | 1  | 1   | 1        | 1   | 2   | 2   | 2   |  |
|  |   | Sicherung 5X20 / 10AT  |  |     |          |     |     |     |     |  |
|  |   | Fusible 5X20 / 10AT  |  |     |          |     |     |     |     |  |
|  |   | Fusibile 5X20/10AT   |  |     |          |     |     |     |     |  |
| 2.2  | FZ 214229   | Fuse 1AT 250V  | 1  | 1   | 1        | 1   | 2   | 2   | 2   |  |
|  |   | Sicherung 1AT 250V   |  |     |          |     |     |     |     |  |
|  |   | Fusible 1AT 250V   |  |     |          |     |     |     |     |  |
|  |   | Fusibile 1AT 250V  |  |     |          |     |     |     |     |  |
| Gland Details<br>Drüsendetails<br>Détails de la glande<br>Dettagli della ghiandola |   | Gland<br>Drüse<br>Glande<br>Ghiandola  | Locknut<br>Kontermutter<br>Contre-écrou<br>Dado di bloccaggio  |     |          |     |     |     |     |  |
|  |   | M12  | FZ214016   |     | FZ214058 |     |     |     |     |  |
|  |   | M16  | FZ214103   |     | FZ214105 |     |     |     |     |  |
|  |   |  |  |     |          |     |     |     |     |  |
|  |   |  |  |     |          |     |     |     |     |  |
|  |   |  |  |     |          |     |     |     |     |  |



| No | Part N°<br>Teile-Nr<br>Numéro de pièce<br>Parte n | Description / Beschreibung / Descrizione | Number of parts per model<br>Anzahl der Teile pro Modell<br>Nombre de pièces par modèle<br>Numero di parti per modello |     |     |     |     |     |     |
|----|---|--|--|-----|-----|-----|-----|-----|-----|
|    |   |  | 211  | 311 | 411 | 412 | 422 | 622 | 633 |
| 1  | FFC01   | Casting Body                             | 1  | 1   | 2   | 2   | 2   | 2   | 3   |
|    |   | Gießkörper                               |  |     |     |     |     |     |     |
|    |   | Corps de coulée                          |  |     |     |     |     |     |     |
|    |   | Corpo fuso                               |  |     |     |     |     |     |     |
| 2  | FFC02   | Casting Cap LH                           | 1  | 1   | 2   | 2   | 2   | 2   | 3   |
|    |   | Gießkappe LH                             |  |     |     |     |     |     |     |
|    |   | Bouchon de coulée LH                     |  |     |     |     |     |     |     |
|    |   | Tappo Casting SX                         |  |     |     |     |     |     |     |
| 3  | FFC03   | Casting Cap RH                           | 1  | 1   | 2   | 2   | 2   | 2   | 3   |
|    |   | Gießkappe RH                             |  |     |     |     |     |     |     |
|    |   | Bouchon de coulée RH                     |  |     |     |     |     |     |     |
|    |   | Tappo Casting DX                         |  |     |     |     |     |     |     |
| 4  | FFC04   | Casting Swivel Lower                     | 1  | 1   | 2   | 2   | 2   | 2   | 3   |
|    |   | Casting Swivel Lower                     |  |     |     |     |     |     |     |
|    |   | Coulée Pivot Inférieur                   |  |     |     |     |     |     |     |
|    |   | Casting Swivel inferiore                 |  |     |     |     |     |     |     |
| 5  | FFC05   | Casting Swivel Upper                     | 1  | 1   | 2   | 2   | 2   | 2   | 3   |
|    |   | Casting Swivel Upper                     |  |     |     |     |     |     |     |
|    |   | Tige pivotante coulée                    |  |     |     |     |     |     |     |
|    |   | Tomaia girevole in fusione               |  |     |     |     |     |     |     |
| 6  | GA85  | Gasket                                   | 1  | 1   | 2   | 2   | 2   | 2   | 3   |
|    |   | Dichtung                                 |  |     |     |     |     |     |     |
|    |   | Joint                                    |  |     |     |     |     |     |     |
|    |   | Guarnizione                              |  |     |     |     |     |     |     |
| 7  | FZ214065  | M5 x 40 Screw                            | 4  | 4   | 8   | 8   | 8   | 8   | 12  |
|    |   | M5 x 40 Schraube                         |  |     |     |     |     |     |     |
|    |   | Vis M5 x 40                              |  |     |     |     |     |     |     |
|    |   | Vite M5 x 40                             |  |     |     |     |     |     |     |
| 8  | FZ400431  | M4 x 8 Screw                             | 4  | 4   | 8   | 8   | 8   | 8   | 12  |
|    |   | M4 x 8 Schraube                          |  |     |     |     |     |     |     |
|    |   | Vis M4 x 8                               |  |     |     |     |     |     |     |
|    |   | Vite M4 x 8                              |  |     |     |     |     |     |     |



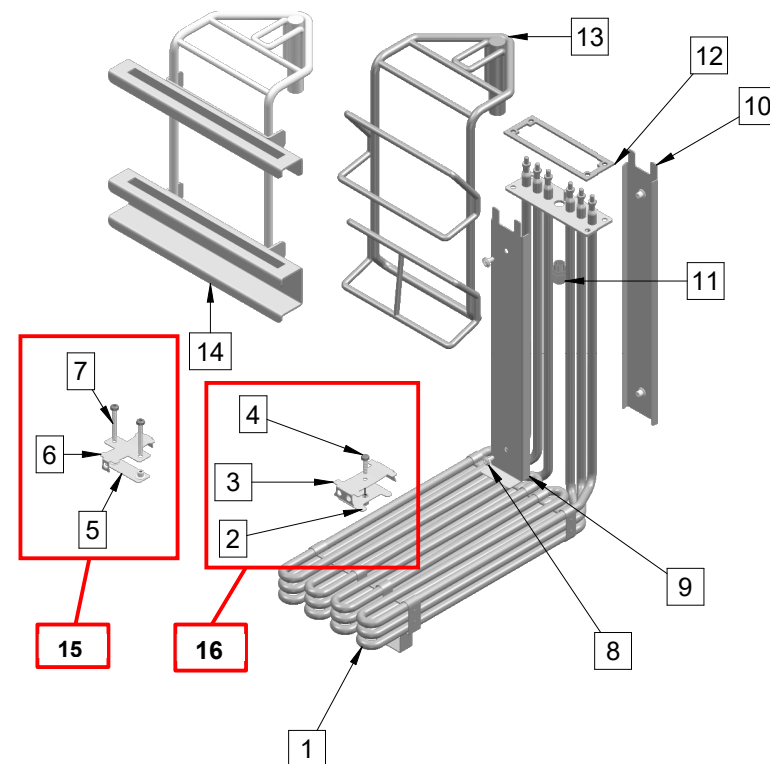
| No | Part N°<br>Teile-Nr<br>Numéro de pièce<br>Parte n | Description / Beschreibung / Descrizione | Number of parts per model<br>Anzahl der Teile pro Modell<br>Nombre de pièces par modèle<br>Numero di parti per modello |     |     |     |     |     |     |
|----|---|--|--|-----|-----|-----|-----|-----|-----|
|    |   |  | 211  | 311 | 411 | 412 | 422 | 622 | 633 |
| 9  | FZ214088  | Magnet                                   | 1  | 1   | 2   | 2   | 2   | 2   | 3   |
|    |   | Magnet                                   |  |     |     |     |     |     |     |
|    |   | Aimant                                   |  |     |     |     |     |     |     |
|    |   | Magnete                                  |  |     |     |     |     |     |     |
| 10 | FZ211024  | Fixed Axis                               | 1  | 1   | 2   | 2   | 2   | 2   | 3   |
|    |   | Feste Achse                              |  |     |     |     |     |     |     |
|    |   | Axe fixe                                 |  |     |     |     |     |     |     |
|    |   | Asse fisso                               |  |     |     |     |     |     |     |
| 11 | FZ214064  | M5 x 20 Screw                            | 4  | 4   | 8   | 8   | 8   | 8   | 12  |
|    |   | M5 x 20 Schraube                         |  |     |     |     |     |     |     |
|    |   | Vis M5x20                                |  |     |     |     |     |     |     |
|    |   | Vite M5 x 20                             |  |     |     |     |     |     |     |
| 12 | FZ400809  | M5 x 25 Screw                            | 4  | 4   | 8   | 8   | 8   | 8   | 12  |
|    |   | M5 x 25 Schraube                         |  |     |     |     |     |     |     |
|    |   | Vis M5x25                                |  |     |     |     |     |     |     |
|    |   | Vite M5 x 25                             |  |     |     |     |     |     |     |
| 13 | FZ214195  | M5 x 10 Screw                            | 2  | 2   | 4   | 4   | 4   | 4   | 6   |
|    |   | M5 x 10 Schraube                         |  |     |     |     |     |     |     |
|    |   | Vis M5x10                                |  |     |     |     |     |     |     |
|    |   | Vite M5 x 10                             |  |     |     |     |     |     |     |
| 14 | PL335   | Plunger                                  | 1  | 1   | 2   | 2   | 2   | 2   | 3   |
|    |   | Kolben                                   |  |     |     |     |     |     |     |
|    |   | Piston                                   |  |     |     |     |     |     |     |
|    |   | Stantuffo                                |  |     |     |     |     |     |     |
| 15 | FZ214116  | Hamlin Switch                            | 1  | 1   | 2   | 2   | 2   | 2   | 3   |
|    |   | Hamlin-Schalter                          |  |     |     |     |     |     |     |
|    |   | Commutateur Hamlin                       |  |     |     |     |     |     |     |
|    |   | Interruttore Hamlin                      |  |     |     |     |     |     |     |
| 16 | SP90  | Spacer                                   | 1  | 1   | 2   | 2   | 2   | 2   | 3   |
|    |   | Abstandshalter                           |  |     |     |     |     |     |     |
|    |   | Entretoise                               |  |     |     |     |     |     |     |
|    |   | Distanziatore                            |  |     |     |     |     |     |     |



| No | Part N°<br>Teile-Nr<br>Numéro de pièce<br>Parte n | Description / Beschreibung / Descrizione | Number of parts per model<br>Anzahl der Teile pro Modell<br>Nombre de pièces par modèle<br>Numero di parti per modello |     |     |     |     |     |     |
|----|---|--|--|-----|-----|-----|-----|-----|-----|
|    |   |  | 211  | 311 | 411 | 412 | 422 | 622 | 633 |
| 17 | FZ401235  | Automatic Couple                         | 1  | 1   | 2   | 2   | 2   | 2   | 3   |
|    |   | Automatisches Paar                       |  |     |     |     |     |     |     |
|    |   | Couple automatique                       |  |     |     |     |     |     |     |
|    |   | Coppia automatica                        |  |     |     |     |     |     |     |
| 18 | FZ211147  | Threaded Fitting                         | 1  | 1   | 2   | 2   | 2   | 2   | 3   |
|    |   | Gewindeanschluss                         |  |     |     |     |     |     |     |
|    |   | Raccord fileté                           |  |     |     |     |     |     |     |
|    |   | Raccordo filettato                       |  |     |     |     |     |     |     |
|    |   |  |  |     |     |     |     |     |     |
|    |   |  |  |     |     |     |     |     |     |
|    |   |  |  |     |     |     |     |     |     |
|    |   |  |  |     |     |     |     |     |     |
|    |   |  |  |     |     |     |     |     |     |
|    |   |  |  |     |     |     |     |     |     |
|    |   |  |  |     |     |     |     |     |     |
|    |   |  |  |     |     |     |     |     |     |
|    |   |  |  |     |     |     |     |     |     |
|    |   |  |  |     |     |     |     |     |     |
|    |   |  |  |     |     |     |     |     |     |
|    |   |  |  |     |     |     |     |     |     |
|    |   |  |  |     |     |     |     |     |     |
|    |   |  |  |     |     |     |     |     |     |
|    |   |  |  |     |     |     |     |     |     |



| No    | Part N°<br>Teile-Nr<br>Numéro de pièce<br>Parte n | Description / Beschreibung / Descrizione | Number of parts per model<br>Anzahl der Teile pro Modell<br>Nombre de pièces par modèle<br>Numero di parti per modello |     |     |     |     |     |     |
|-------|---|--|--|-----|-----|-----|-----|-----|-----|
|       |   |  | 211  | 311 | 411 | 412 | 422 | 622 | 633 |
| 1     | FZ2101629   | Heating element 7.5 kW 230V              | 1  |     | 2   | 2   | 2   |     | 3   |
|       |   | Heizkörper 7.5 kW 230V                   |  |     |     |     |     |     |     |
|       |   | Corps de chauffe 7.5 kW 230V             |  |     |     |     |     |     |     |
|       |   | Resistenza 7.5 kW 230V                   |  |     |     |     |     |     |     |
|       | EL289   | Heating element 11 kW 230V               | 1  |     | 2   | 2   | 2   |     | 3   |
|       |   | Heizkörper 11 kW 230V                    |  |     |     |     |     |     |     |
|       |   | Corps de chauffe 11 kW 230V              |  |     |     |     |     |     |     |
|       |   | Resistenza 11 kW 230V                    |  |     |     |     |     |     |     |
|       | EL287   | Heating element 11.4 kW 230V             |  | 1   |     |     |     |     | 2   |
|       |   | Heizkörper 11.4 kW 230V                  |  |     |     |     |     |     |     |
|       |   | Corps de chauffe 11.4 kW 230V            |  |     |     |     |     |     |     |
|       |   | Resistenza 11.4 kW 230V                  |  |     |     |     |     |     |     |
| EL288 | Heating element 15 kW 230V                        |  | 1  |     |     |     |     | 2   |     |
|       | Heizkörper 15 kW 230V                             |  |  |     |     |     |     |     |     |
|       | Corps de chauffe 15 kW 230V                       |  |  |     |     |     |     |     |     |
|       | Resistenza 15 kW 230V                             |  |  |     |     |     |     |     |     |
| 2     | 50254   | Thermostat Phial Clamp                   | 1  |     | 1   | 1   | 2   |     | 3   |
|       |   | Thermostat Phial klemme                  |  |     |     |     |     |     |     |
|       |   | Thermostat Flacon pince                  |  |     |     |     |     |     |     |
|       |   | Morsetto per termostato Phial            |  |     |     |     |     |     |     |
| 3     | 50253   | Thermostat Phial Bracket                 | 1  |     | 1   | 1   | 2   |     | 3   |
|       |   | Thermostat Phial Halterung               |  |     |     |     |     |     |     |
|       |   | Support de Thermostat Phial              |  |     |     |     |     |     |     |
| 4     | FAS514  | M4 x 16 A2 TX Pan HD Screw               | 1  |     | 1   | 1   | 2   |     | 3   |
|       |   | M4 x 16 A2 TX Pan HD-Schraube            |  |     |     |     |     |     |     |
|       |   | Vis Pan HD M4 x 16 A2 TX                 |  |     |     |     |     |     |     |
|       |   | Vite M4 x 16 A2 TX Pan HD                |  |     |     |     |     |     |     |
| 5     | 50274   | Thermostat Phial Clamp                   |  |     | 2   |     |     |     | 4   |
|       |   | Thermostat Phial klemme                  |  |     |     |     |     |     |     |
|       |   | Thermostat Flacon pince                  |  |     |     |     |     |     |     |
|       |   | Morsetto per termostato Phial            |  |     |     |     |     |     |     |
| 6     | 50273   | Thermostat Phial Bracket                 |  |     | 2   |     |     |     | 4   |
|       |   | Thermostat Phial Halterung               |  |     |     |     |     |     |     |
|       |   | Support de Thermostat Phial              |  |     |     |     |     |     |     |
|       |   | Staffa per Thermostat Phial              |  |     |     |     |     |     |     |
| 7     | FAS823  | M4 x 35 A2 TX Pan HD Screw               |  | 4   |     |     |     |     | 8   |
|       |   | M4 x 35 A2 TX-Käse-HD-Schraube           |  |     |     |     |     |     |     |
|       |   | Vis M4 x 35 A2 TX Cheese HD              |  |     |     |     |     |     |     |
|       |   | Vite M4 x 35 A2 TX Cheese HD             |  |     |     |     |     |     |     |



**Elements and Basket Support / Elemente und Korbunterstützung / Éléments et support de panier / Elementi e Supporto Cesto**

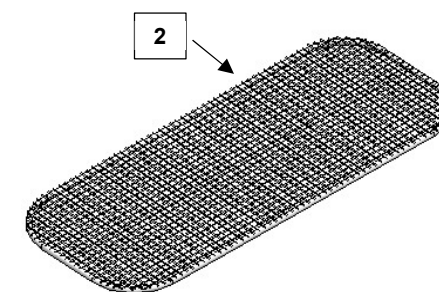
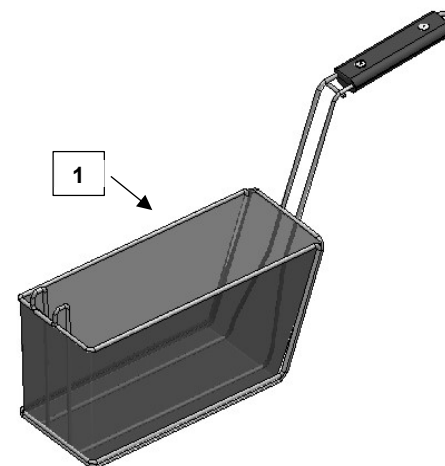


| No | Part N°<br>Teile-Nr<br>Numéro de pièce<br>Parte n | Description / Beschreibung / Descrizione | Number of parts per model<br>Anzahl der Teile pro Modell<br>Nombre de pièces par modèle<br>Numero di parti per modello                          |     |     |     |     |     |     |
|----|---|--|---|-----|-----|-----|-----|-----|-----|
|    |   |  | 211   | 311 | 411 | 412 | 422 | 622 | 633 |
| 8  | FZ400431  | M4 x 8 Screw                             | 2   | 2   | 2   | 2   | 4   | 4   | 6   |
|    |   | M4 x 8 Schraube                          |   |     |     |     |     |     |     |
|    |   | Vis M4 x 8                               |   |     |     |     |     |     |     |
|    |   | Vite M4 x 8                              |   |     |     |     |     |     |     |
| 9  | 50161   | Thermostat Cover 2                       | 1   | 1   | 1   | 1   | 2   | 2   | 3   |
|    |   | Thermostatabdeckung 2                    |   |     |     |     |     |     |     |
|    |   | Couvercle du thermostat 2                |   |     |     |     |     |     |     |
|    |   | Coperchio termostato 2                   |   |     |     |     |     |     |     |
| 10 | 50160   | Thermostat Cover                         | 1   | 1   | 1   | 1   | 2   | 2   | 3   |
|    |   | Thermostatabdeckung                      |   |     |     |     |     |     |     |
|    |   | Couvercle du thermostat                  |   |     |     |     |     |     |     |
|    |   | Coperchio termostato                     |   |     |     |     |     |     |     |
| 11 | FZ214045  | Gland / Stuff Box M10X1.5ø4-6            | 1   | 1   | 1   | 1   | 2   | 2   | 3   |
|    |   | Stopbuchse M10X1.5ø4-6                   |   |     |     |     |     |     |     |
|    |   | Presse Etoupe M10X1.5 ø4-6               |   |     |     |     |     |     |     |
|    |   | Stuff Box M10X1.5ø4-6                    |   |     |     |     |     |     |     |
| 12 | FZ 211069   | Seal Heating Element                     | 1   | 1   | 2   | 2   | 2   | 2   | 3   |
|    |   | Dichtung Heeizorper                      |   |     |     |     |     |     |     |
|    |   | Joint Corps de Chauffe                   |   |     |     |     |     |     |     |
|    |   | Sigillare l'elemento riscaldante         |   |     |     |     |     |     |     |
| 13 | FZ211067  | Basket Holder                            | 1   | 1   | 2   | 2   | 2   | 2   | 3   |
|    |   | Korbaufhängebugel                        |   |     |     |     |     |     |     |
|    |   | Support Panier                           |   |     |     |     |     |     |     |
|    |   | Porta cestino                            |   |     |     |     |     |     |     |
| 14 | FZ 311067   | Basket Holder FZ301093                   |   | 1   |     |     |     | 1   |     |
|    |   | Korbaufhängebugel FZ301093               |   |     |     |     |     |     |     |
|    |   | Support Panier FZ301093                  |   |     |     |     |     |     |     |
|    |   | Porta cestino FZ301093                   |   |     |     |     |     |     |     |
| 15 | BR79  | Thermostat Bracket Assembly              | 11kW Elements<br>11-kW-Elementen<br>Éléments de 11 kW<br>Elementi da 11kW   |     |     |     |     |     |     |
|    |   | Montage der Thermostathalterung          |   |     |     |     |     |     |     |
|    |   | Ensemble de support de thermostat        |   |     |     |     |     |     |     |
|    |   | Gruppo staffa termostato                 |   |     |     |     |     |     |     |
| 16 | BR78  | Thermostat Bracket Assembly              | 7.5kW, 11.4kW & 15kW Elements<br>7,5 kW, 11,4 kW und 15 kW Elemente<br>Éléments de 7,5 kW, 11,4 kW et 15 kW<br>Elementi da 7,5kW, 11,4kW e 15kW |     |     |     |     |     |     |
|    |   | Montage der Thermostathalterung          |   |     |     |     |     |     |     |
|    |   | Ensemble de support de thermostat        |   |     |     |     |     |     |     |
|    |   | Gruppo staffa termostato                 |   |     |     |     |     |     |     |

**Elements and Basket Support / Elemente und Korbunterstützung / Éléments et support de panier / Elementi e Supporto Cesto**



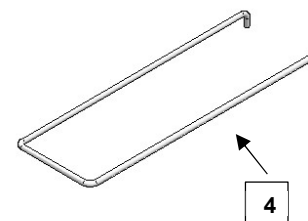
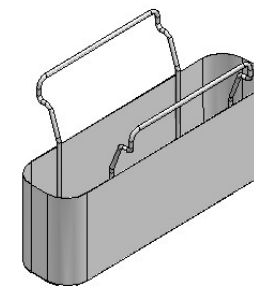
| No       | Part N°<br>Teile-Nr<br>Numéro de pièce<br>Parte n | Description / Beschreibung /<br>Descrizione | Number of parts per model<br>Anzahl der Teile pro Modell<br>Nombre de pièces par modèle<br>Numero di parti per modello |     |     |     |     |     |     |
|----------|---|---|--|-----|-----|-----|-----|-----|-----|
|          |   |   | 211  | 311 | 411 | 412 | 422 | 622 | 633 |
| 1        | FZ100831  | Frying Basket                               | 1  |     |     | 2   | 2   |     | 3   |
|          |   | Frittierkorb                                |  |     |     |     |     |     |     |
|          |   | Panier à Frire                              |  |     |     |     |     |     |     |
|          |   | Cestino per friggere                        |  |     |     |     |     |     |     |
|          | FZ100761  | Frying Basket                               | (1)  |     |     |     |     |     | 2   |
|          |   | Frittierkorb                                |  |     |     |     |     |     |     |
|          |   | Panier à Frire                              |  |     |     |     |     |     |     |
|          |   | Cestino per friggere                        |  |     |     |     |     |     |     |
|          | FZ301093  | Frying Basket                               | (2)  |     |     |     |     |     |     |
|          |   | Frittierkorb                                |  |     |     |     |     |     |     |
|          |   | Panier à Frire                              |  |     |     |     |     |     |     |
|          |   | Cestino per friggere                        |  |     |     |     |     |     |     |
| FZ411048 | Frying Basket                                     |   |  |     | 1   |     |     |     |     |
|          | Frittierkorb                                      |   |  |     |     |     |     |     |     |
|          | Panier à Frire                                    |   |  |     |     |     |     |     |     |
|          | Cestino per friggere                              |   |  |     |     |     |     |     |     |
| 2        | FZ211047  | Batter Plate                                | 1  |     |     |     | 2   |     | 3   |
|          |   | Teigplatte                                  |  |     |     |     |     |     |     |
|          |   | Plaque de pâte                              |  |     |     |     |     |     |     |
|          |   | Piatto di pastella                          |  |     |     |     |     |     |     |
|          | FZ311047  | Batter Plate                                |  | 1   |     |     |     | 2   |     |
|          |   | Teigplatte                                  |  |     |     |     |     |     |     |
|          |   | Plaque de pâte                              |  |     |     |     |     |     |     |
|          |   | Piatto di pastella                          |  |     |     |     |     |     |     |
|          | FZ411047  | Batter Plate                                |  |     | 1   | 1   |     |     |     |
|          |   | Teigplatte                                  |  |     |     |     |     |     |     |
|          |   | Plaque de pâte                              |  |     |     |     |     |     |     |
|          |   | Piatto di pastella                          |  |     |     |     |     |     |     |
|          |   |   |  |     |     |     |     |     |     |



**Baskets, Batter Plates and Filters / Körbe, Teigplatten und Filter / Paniers, plaques de pâte et filtres / Cestelli, Piatti e Filtri**



| No                         | Part N°<br>Teile-Nr<br>Numéro de pièce<br>Parte n | Description / Beschreibung /<br>Descrizione | Number of parts per model<br>Anzahl der Teile pro Modell<br>Nombre de pièces par modèle<br>Numero di parti per modello |     |     |     |     |     |     |
|----------------------------|---|---|--|-----|-----|-----|-----|-----|-----|
|                            |   |   | 211  | 311 | 411 | 412 | 422 | 622 | 633 |
| 3                          | FZ101139  | Stainless Steel Filter                      | 1  |     |     |     | 2   | 3   |     |
|                            |   | Edelstahlfilter                             |  |     |     |     |     |     |     |
|                            |   | Filtre en acier inoxydable                  |  |     |     |     |     |     |     |
|                            |   | Filtro in acciaio inossidabile              |  |     |     |     |     |     |     |
|                            | FZ101140  | Stainless Steel Filter                      |  | 1   | 1   | 1   |     | 2   |     |
|                            |   | Edelstahlfilter                             |  |     |     |     |     |     |     |
| Filtre en acier inoxydable |   |   |  |     |     |     |     |     |     |
| 4                          | FZ101142  | Fine Tissue Filter Support                  | 1  |     |     |     | 2   | 3   |     |
|                            |   | Unterstützung für Feingewebefilter          |  |     |     |     |     |     |     |
|                            |   | Support de filtre à tissu fin               |  |     |     |     |     |     |     |
|                            |   | Supporto per filtri per tessuti fini        |  |     |     |     |     |     |     |
|                            | FZ101143  | Fine Tissue Filter Support                  |  | 1   | 1   | 1   |     | 2   |     |
|                            |   | Unterstützung für Feingewebefilter          |  |     |     |     |     |     |     |
|                            |   | Support de filtre à tissu fin               |  |     |     |     |     |     |     |
|                            |   | Supporto per filtri per tessuti fini        |  |     |     |     |     |     |     |
| 5                          | FZ101158  | Fine Tissue filter                          | 1  |     |     |     | 2   | 3   |     |
|                            |   | Feingewebefilter                            |  |     |     |     |     |     |     |
|                            |   | Filtre à tissus fins                        |  |     |     |     |     |     |     |
|                            |   | Filtro per tessuti fini                     |  |     |     |     |     |     |     |
|                            | FZ101159  | Fine Tissue filter                          |  | 1   | 1   | 1   |     | 2   |     |
|                            |   | Feingewebefilter                            |  |     |     |     |     |     |     |
| Filtre à tissus fins       |   |   |  |     |     |     |     |     |     |
| 6                          | FZ100805  | Lifting Hook                                | 1  | 1   | 1   | 1   | 1   | 1   |     |
|                            |   | Hebehaken                                   |  |     |     |     |     |     |     |
|                            |   | Crochet de lavage                           |  |     |     |     |     |     |     |
|                            |   | Gancio di sollevamento                      |  |     |     |     |     |     |     |
|                            |   |   |  |     |     |     |     |     |     |
|                            |   |   |  |     |     |     |     |     |     |
|                            |   |   |  |     |     |     |     |     |     |



5



6

